



The RDI Governance System



Vasileios Pitsinigkos
Head Of
Managing Authority of Eastern Macedonia - Thrace Region



The Basics of a Governance System



- A good model of spatial development must be based on a **governance system** and the **appropriate processes** which allow the search for a competitive advantage through new - future - economic activities.
- **System**: What is the role of each stakeholder within the Regional Innovation System? How he can contribute to SS more effectively?
- **Process**: How it is defined, implemented and what it contributes towards the desired outcome? (a successful RIS₃)



The Components of a Governance System



ΕΙΔΙΚΗ ΥΠΗΡΕΣΙΑ ΔΙΑΧΕΙΡΙΣΗΣ Ε.Π.
ΠΕΡΙΦΕΡΕΙΑΣ ΑΝΑΤΟΛΙΚΗΣ ΜΑΚΕΔΟΝΙΑΣ & ΘΡΑΚΗΣ

Components	Contribution to the Governance System
RESEARCH (Universities, Research Institutes)	<ul style="list-style-type: none">•They develop the basic knowledge that leads to support technologies of general use•They can be a source of entrepreneurial discovery
TECHNOLOGY (R&D into enterprises)	<ul style="list-style-type: none">•They develop solutions which correspond to the needs of enterprises•Significant role of mediator between RESEARCH and ENTERPRISES
ENTERPRISES	<ul style="list-style-type: none">•Creation of wealth and jobs•A key challenge is to highlight 'hidden innovation' and incorporate it into the innovation management procedures (and into the statistics!)
SUPPORT STRUCTURES (Technological parks, clusters, associations of enterprises,...)	<ul style="list-style-type: none">•They mediate between RESEARCH, ENTERPRISES and LOCAL GOVERNMENT.•Their role depends on the strategic approach that will be followed.
LOCAL GOVERNMENT (Region, Development Agencies of the Local Authorities)	<ul style="list-style-type: none">•Key partners in the initial stages of the procedure, supporting the overcoming of obstacles in the relationships / networking of the other participants. Identification of funding opportunities.
SOCIETY	<ul style="list-style-type: none">•Validation of the strategy•Reduction of the time from the creation to the commercialisation of knowledge.



So, the critical question is...



...how are we going to establish a Governance System that is capable to **engage** all the components of the regional innovation system, to **adjust** all current inter-relations and **facilitate** the process of **entrepreneurial discovery process** (EDP) towards the ultimate objective which is the re-definition of the production and economic environment of the Region of EMTh?



Governance System specifications

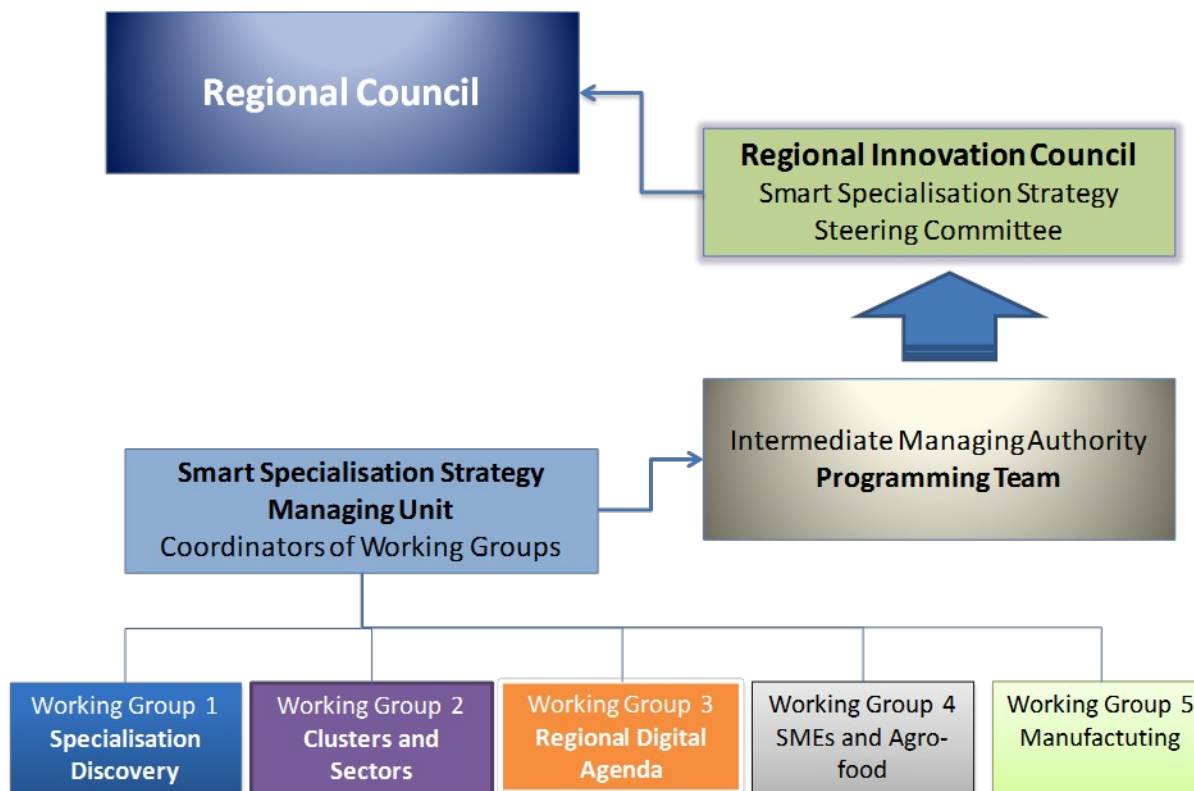


RIS3 Guide Steps	Sections	RIS3 Guide Ref	Short Explanatory
STEP 2 GOVERNANCE	Governance Structures	Step 2 (page 21) Annex I (pp. 34-44)	Identification of specific bodies and definition of their tasks, roles and responsibilities
	Broad Participation		Interactive, consensus-based application of collaborative leadership principles
	Management and Communication		Quadruple helix actors (involvement of boundary spanners) Use of open forum discussion and citizen dialogue E-governance

<http://s3platform.jrc.ec.europa.eu/ris3-assessment-wheel>

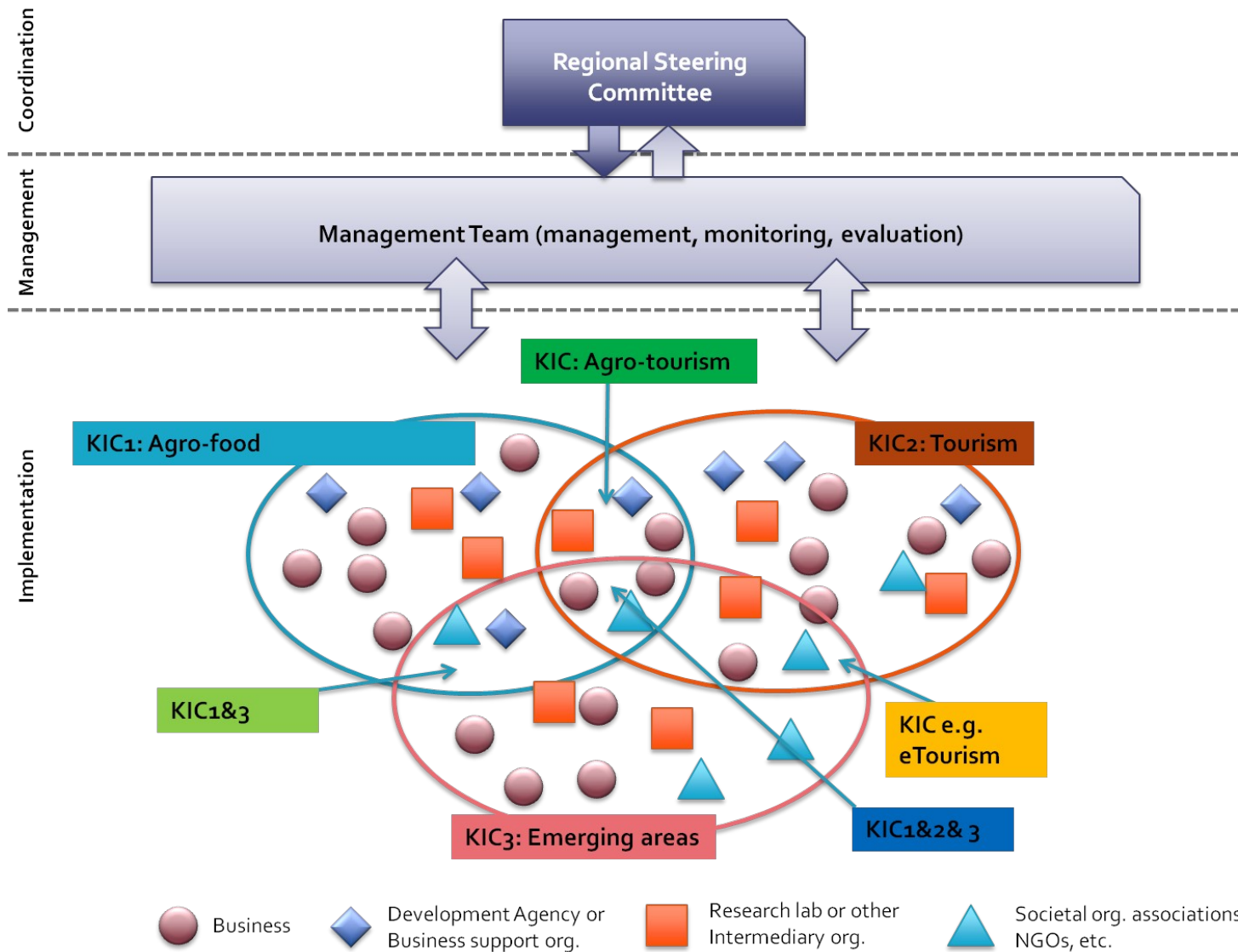


The initial proposal by the EU expert team





And the one, in the RIS3 Strategy of REMTh





1st Level: Co-ordination

Steering Committee

- Includes high-level representatives of ALL sectors (policy, research, industry, society) with ability to make decisions and take actions
- The Regional R&I Council can be exploited in this role provided it is given decision-making power apart from an advisory role
- Responsibilities:
 - Analyse the regional policies/strategies and devise suitable tools for achieving the targets set; advice on networking of regional actors; assisting in funds identification and further development of the regional research capacity (cf. Law 4310/2014)
 - Supervise the work of the Management Team, incl. quality assurance
 - Representing the regions and its RIS3 among other (neighbouring) regions, and relevant national and EU bodies
 - Reports to the Governor – Regional Council and the GSRT.



2nd Level: Management



Management Team

- Team of 4-5 people coming from relevant departments and units of the Regional Auth. and the O.P. Managing Auth.
- Responsibilities:
 - Translating the RIS3 strategic objectives into operation objectives
 - Setting up the relevant tools and actions for implementing RIS3 (calls, tenders, etc.)
 - Monitoring RIS3 and preparing progress reports
 - Evaluating the impact from RIS3 actions
 - Submitting monitoring and evaluation data and progress reports to the SC for feedback and taking corrective actions
 - Networking with other regions (in Greece or abroad) to exchange experience and good practices
 - Identification of funds (national or international) for supporting actions and preparing funding applications or guide beneficiaries
 - Raise awareness about RIS3 opportunities and disseminate results
 - Implement the EDP process and support the operation of the KICs (3rd governance level)



3rd Level: Implementation



Knowledge & Innovation Communities - KICs

- KICs initially set up ad hoc through networking processes like the EDP; then supported by MT to become autonomous, self-organised and sustainable
- Main responsibility:
 - the translation of ideas into concrete proposals for support under RIS3 or other relevant measures, programmes at national or international level; and
 - facilitation of a 2-way dialogue between the design and implementation of RIS3 on a continuous base
- Should have a thematic and cross-thematic focus (e.g. agro-food & tourism)
- Of great importance to engage societal organisations (e.g. from environment, health, food, culture depending on the KIC focus) and establish communication/collaboration among all stakeholders (policy, research, business, society) not only to raise awareness and increase social acceptance of R&I but also to encourage social innovations in solving societal challenges.



3rd Level: Implementation



Work to be done by the Gov WG

- WG to consist of max 10 people from all sectors (regional authorities, research, business and societal organisations)
- Tasks – report to be submitted by April 2015:
 - Further articulation, refinement and elaboration of the gov. structure based on your comments
 - Defining the processes and actors that will be included in each unit of the gov. structure
 - Selection criteria and qualifications' profile needed in each unit of the gov. structure
 - And consequently definition of the training needs vis-à-vis the needed qualifications and skills



Main issues to be addressed



Questions:

- How do we overcome conventional approaches?
“Leading the strategy –V– Managing programmes”
- How do we raise awareness, mobilise and train the ‘bottom-up’ structures (implementation level)?
- Which capacities or training is required, from stakeholders, at all levels?



Main issues to be addressed



Questions:

- Linkages to national RIS3 Governance System?
- Moreover, how to boost a cooperative culture in research institutions and universities with businesses?
- And finally, how to ensure that the resources of the Thematic Objective 1 of the Operational Programme, will be addressed towards applied industrial research, in order to improve the competitiveness of the secondary sector, of the regional economy?



Region of Eastern Macedonia – Thrace Managing Authority



The RDI Governance System

Thank you for your patience...

... now let us search for answers!

Vasileios Pitsinigkos
Head of
Managing Authority of Eastern Macedonia - Thrace Region
vpitsinigkos@mou.gr